



Operations Report

October 11, 2024 – November 14, 2024



Main Canal

- Diversions stopped
10/22/24 @8am
- 3 days to run down
- Open all Spill Gates for winter alignment
- Remove Diversion Dam and Olney Creek 10/28/24-11/8/24

Churn Creek Pumps

- System shut down
10/25/24 @ 3pm



Maintenance Season

Nov. 11, 2024 – Mar. 30, 2025

Staff

- Vegetation management – Cut and Spray
- Ditch reshaping
- Pipe repairs
- Waterman/ Slide gate repair/replacement on Main Canal and lateral system
- Trash Screens

Contractors

- Spring Gulch to 3rd St.
- Panorama
- Dead tree removal (ACID assist)
- CAL FIRE crews

See you out there!

Lateral 29

Lavoy



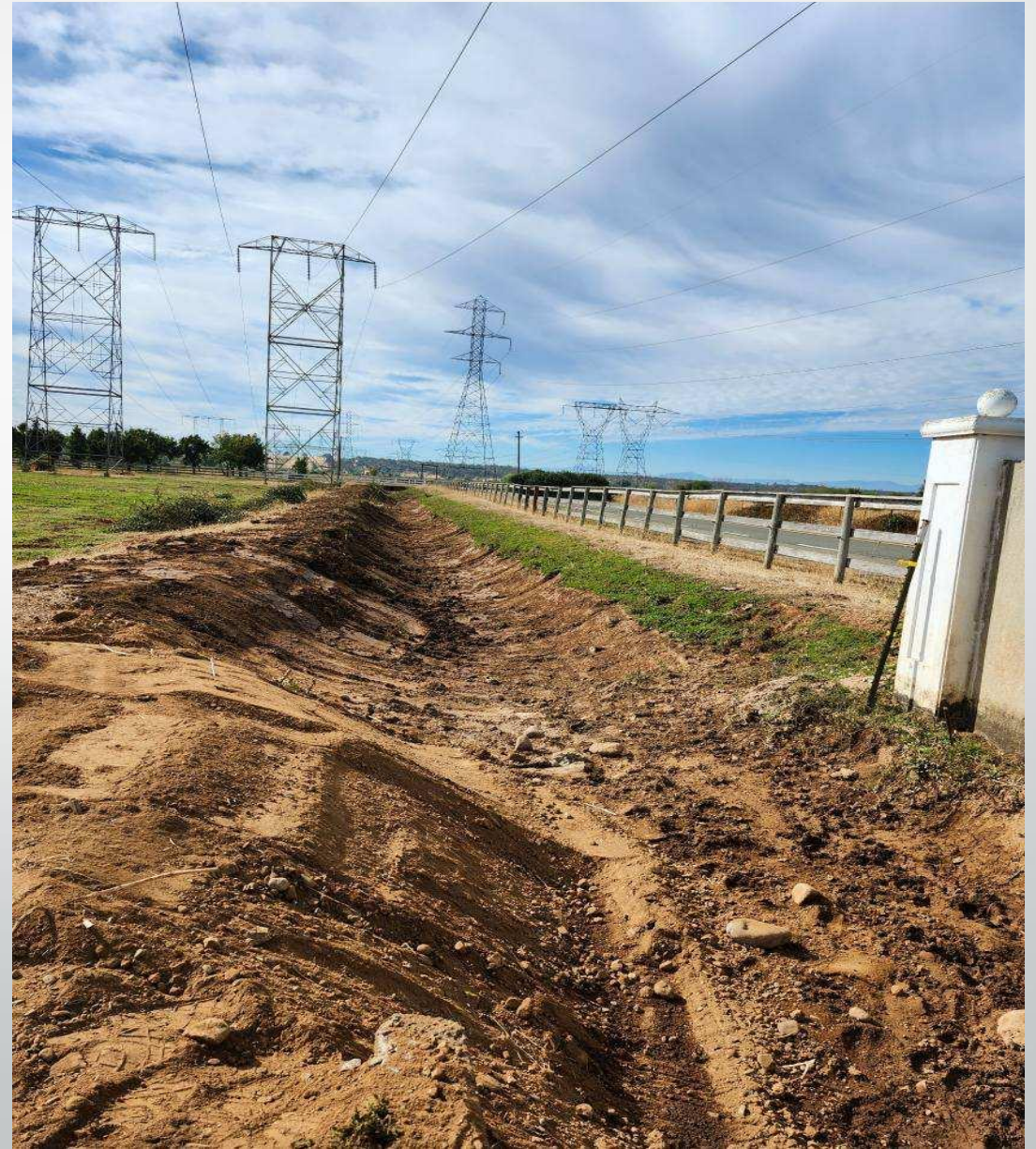
Lateral 29

Johns



Lateral 29

Kimberly Farms



Lateral 29

Kimberly Rd
(rained out-in
progress)



Lateral 29.1

Kimberly Split (before)



Lateral 29.1

Kimberly Split (after)



Churn Creek Bottom

Green Meadows Ln.

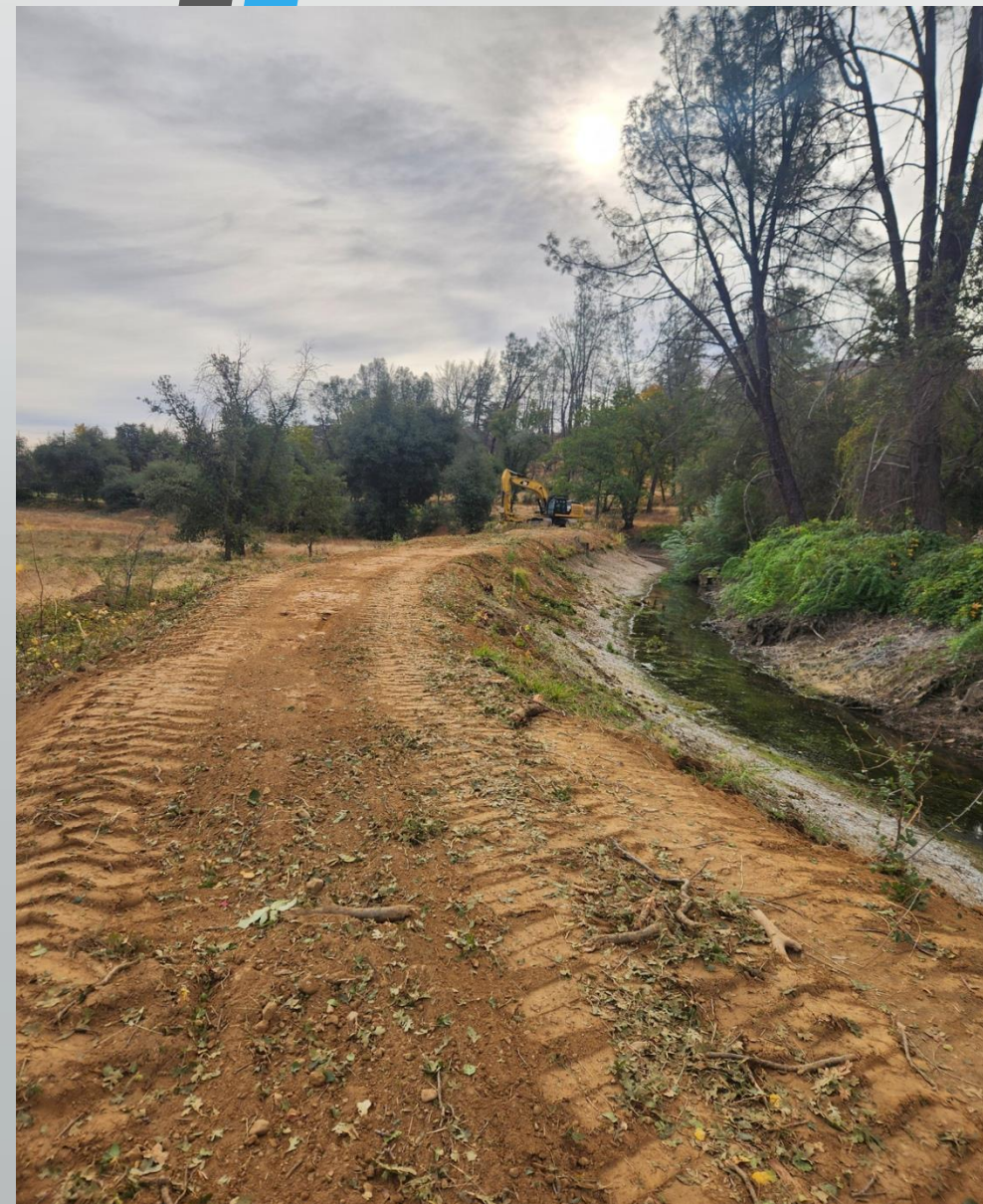


Diversion Dam Removal



Main Canal Project

Spring Gulch





Clear Creek Siphon Grille Fabrication



Clear Creek Siphon Grille Fabrication



Lateral 21

Robinson's Turn out



Lateral 21 (Before)

S-turn on Balls Ferry



Lateral 21 (after)

S-turn @ Balls Ferry



CALFIRE Crew

Floyd Ln. to Adams Rd.
4000 ft



Churn Creek Bottom

Behind TA Travel Center

(in progress)





The list is long, and days are short.

Together we accomplish great things.

Thank you ALL!!!