

Anderson-Cottonwood Irrigation District

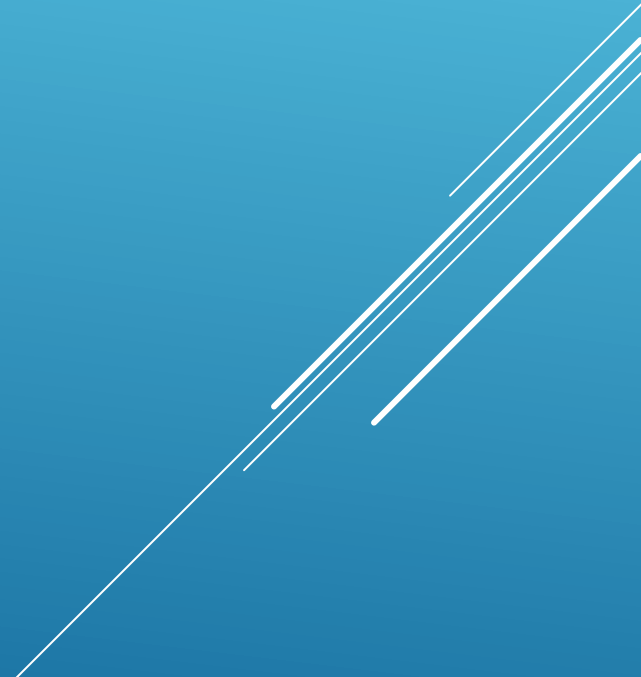
Punch List Repairs

2024 Irrigation Season

Gates opened April 22

Lateral 29

Water loss mitigation













Job Complete

Lateral 35

Snicker Ln





Job Complete

Lateral 41

Black Ln. (north)









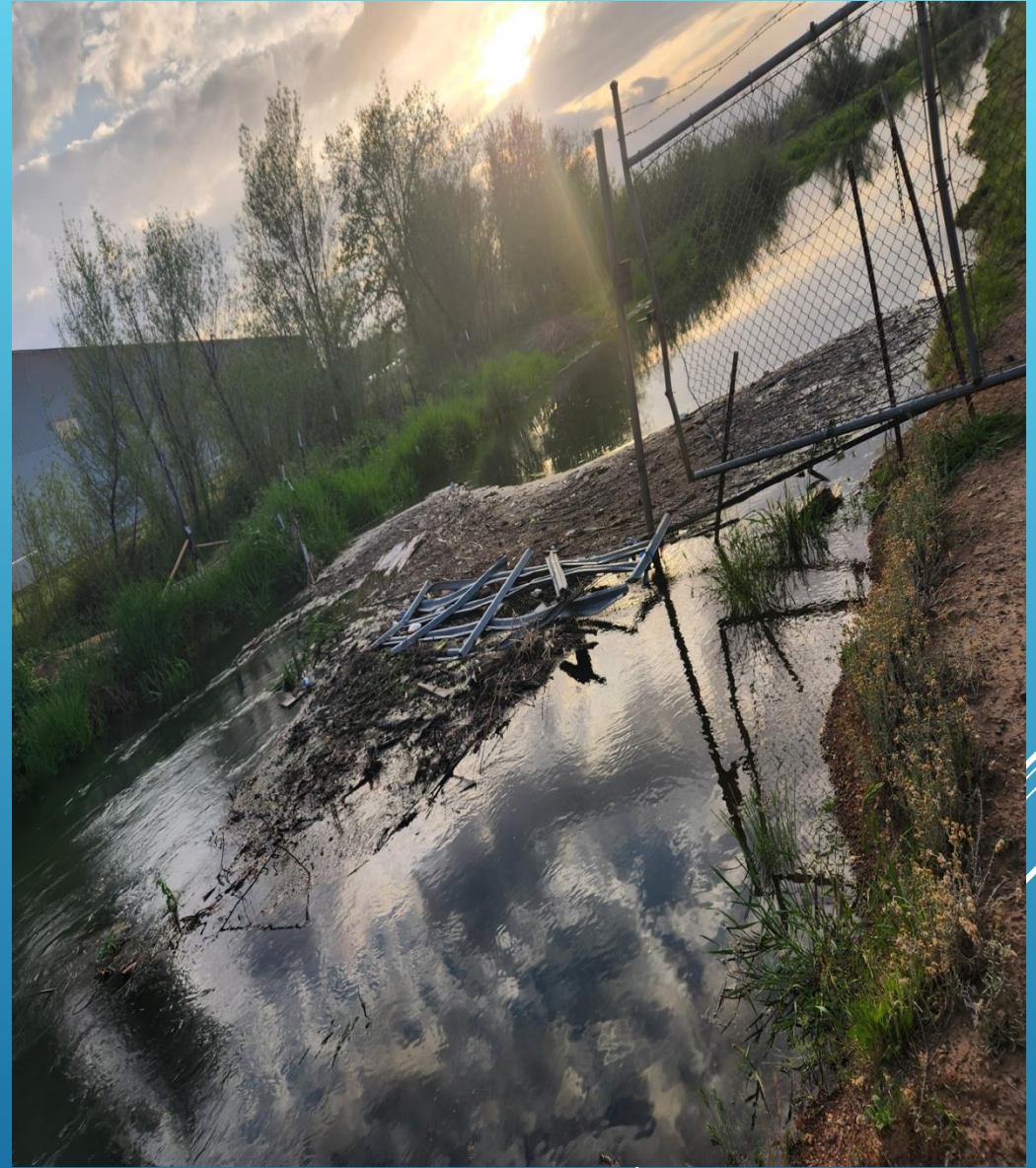
Job Complete



Cross Fences
decrease efficiency

Thank you everyone!

Several thin, parallel white lines are drawn diagonally across the bottom right corner of the slide, extending from the right edge towards the bottom.



Start-up Operations

-USBR Flow meter off line for 2 days

1. 200cfs for two days

**2. 100cfs @ Ludwig Gulch
(sustained flows)**

3. 150cfs for one days

**4. Verified 35cfs supplied to
end user**

5. Ramp up to 245cfs

6. Begin deliveries

Daily Tasks

CLEAN

- 10-Trash screen on main canal
- Lateral specific- trash screens
- Scheduling
- Water changes
- Monitor River flows & SCADA
- Adjust drum gate as demand increases/decreases

Repairs- (in progress/complete)

- Broken pipe-Lateral 2
- Waterman gate replacement-Lateral 1
- Washout lateral 29
- Broken Slide gate lateral 29
- Water loss repair-lateral 21

Off Season Repairs

WHAT A DIFFERENCE!!!!

2023- 290cfs supplied.....

- 30cfs available to the south end

2024- 255cfs supplied.....

-40cfs available to the south end

-15-20cfs constant to the end

Several white diagonal lines of varying lengths and thicknesses are positioned on the right side of the slide, extending from the middle towards the bottom right corner.



Water is here!

**Help us help you to stay on
schedule.**

Get irrigated and move it down.